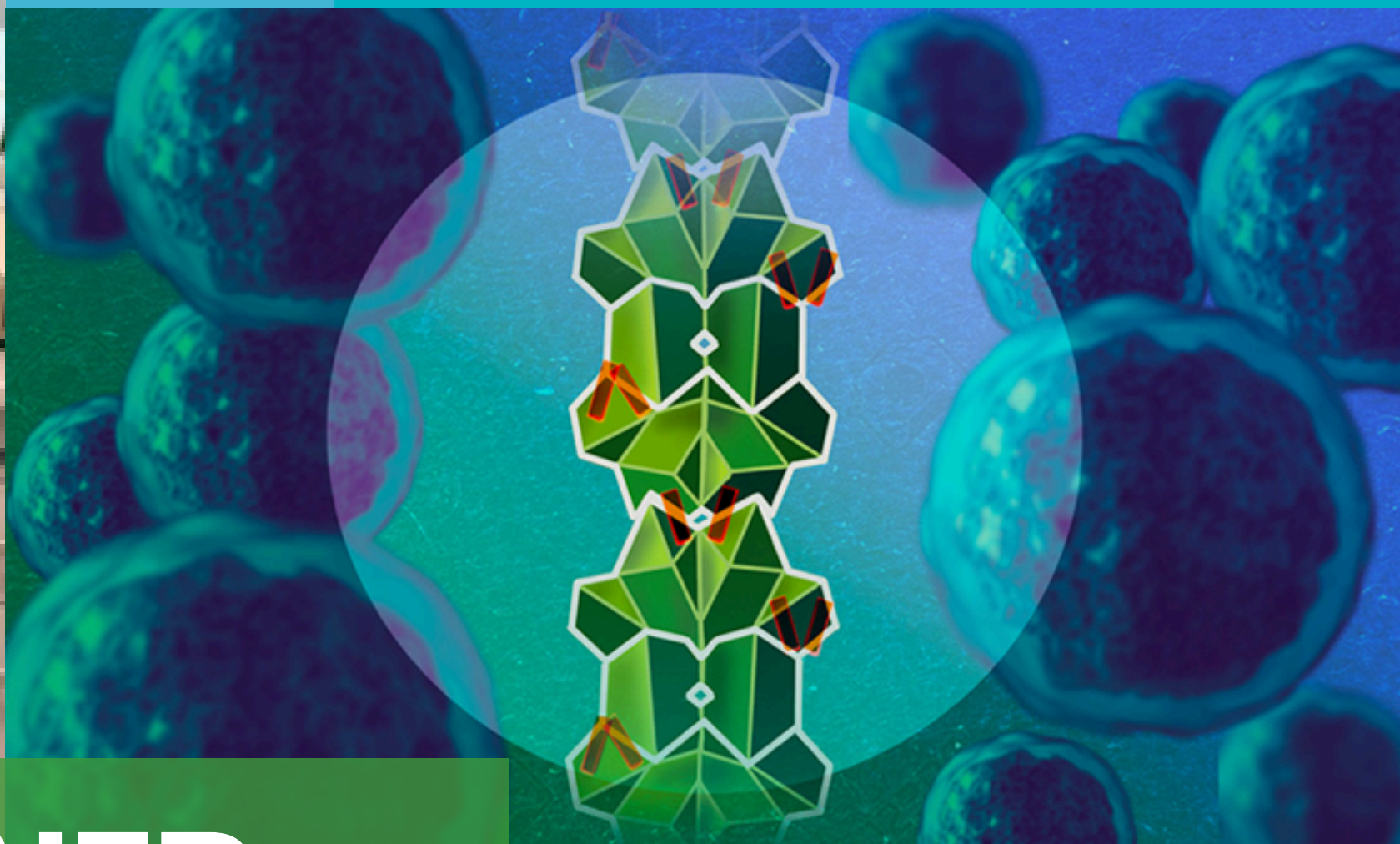


# 19 MARCH

16.30 P.M.  
ROOM B107  
POVO 2



## STEFAN WERNER

UNIVERSITY MEDICAL CENTER HAMBURG

# From Clinical Correlation to Molecular Function

Molecular analysis of circulating tumour cells (CTCs) allows repeated analysis for surveillance and captures the heterogeneity of cancers. We have developed a workflow to analyse the expression of genes that indicate the emergence of therapy resistance in aggressive variant prostate cancer. We also used this method to validate the newly discovered molecular mechanism of CtBP polymerisation as a regulatory principle of Polycomb-mediated histone modifications in prostate cancer.

CIBIO EXTERNAL SEMINAR



UNIVERSITÀ  
DI TRENTO

Dipartimento di  
Biologia Cellulare, Computazionale e Integrata - CIBIO



DEPARTMENT OF CELLULAR, COMPUTATIONAL  
AND INTEGRATIVE BIOLOGY - CIBIO  
VIA SOMMARIVE, 9  
38123 - POVO (TN)  
COMUNICAZIONE.CIBIO@UNITN.IT